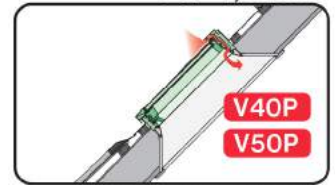
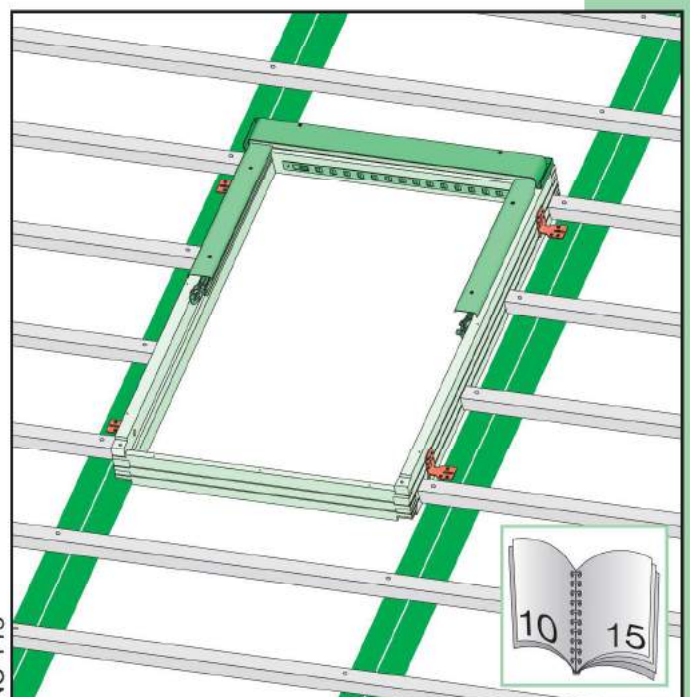
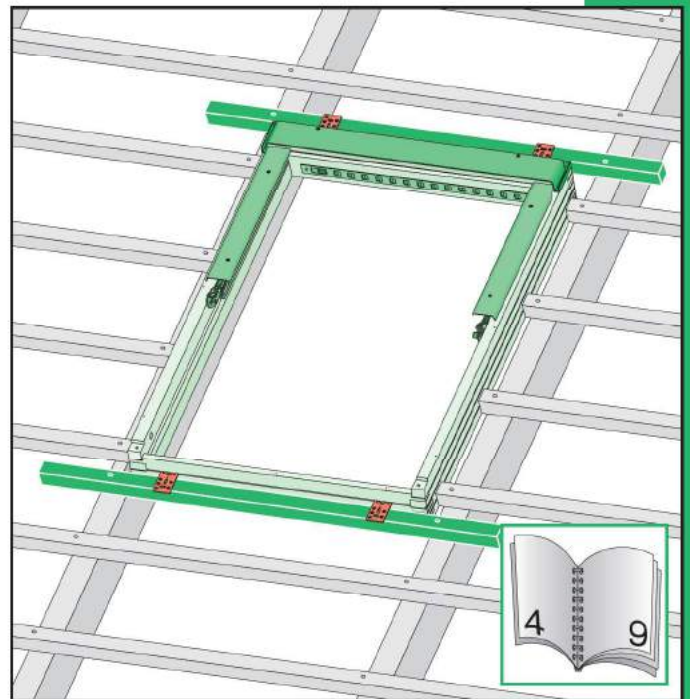


FTP-V, FTU-V

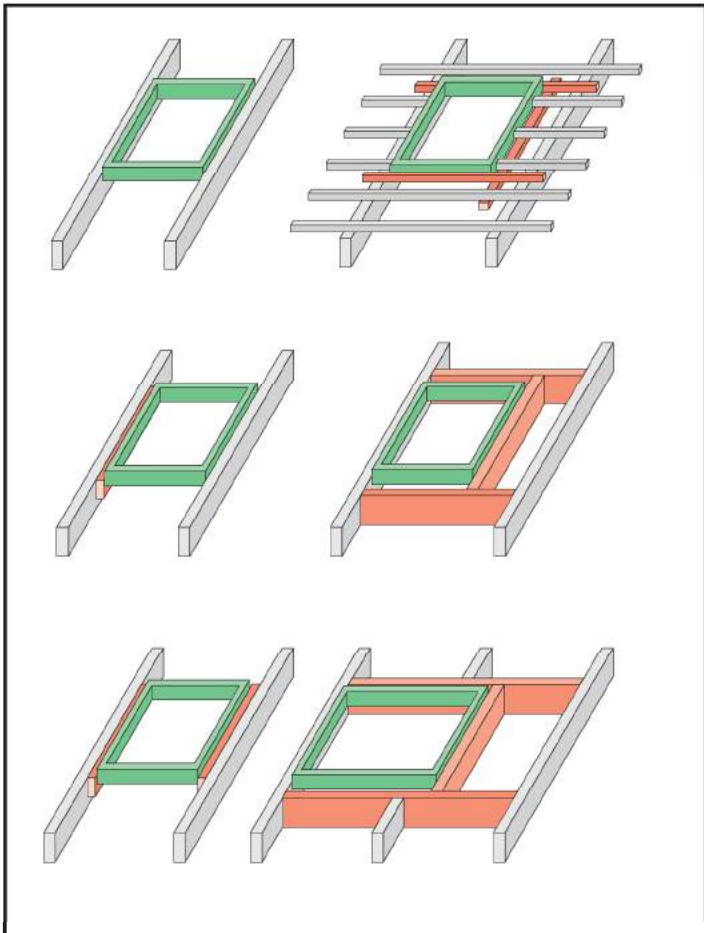
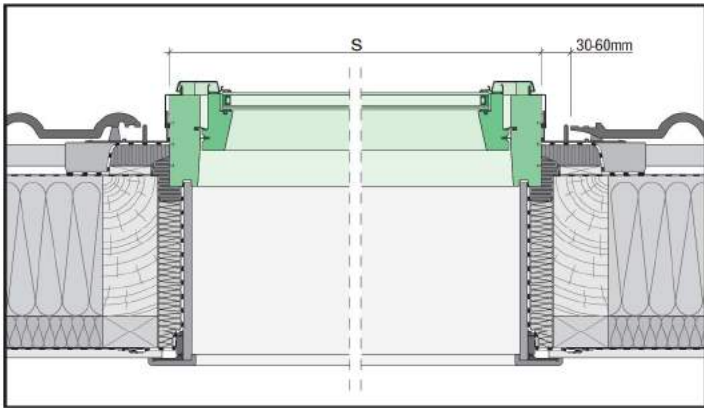
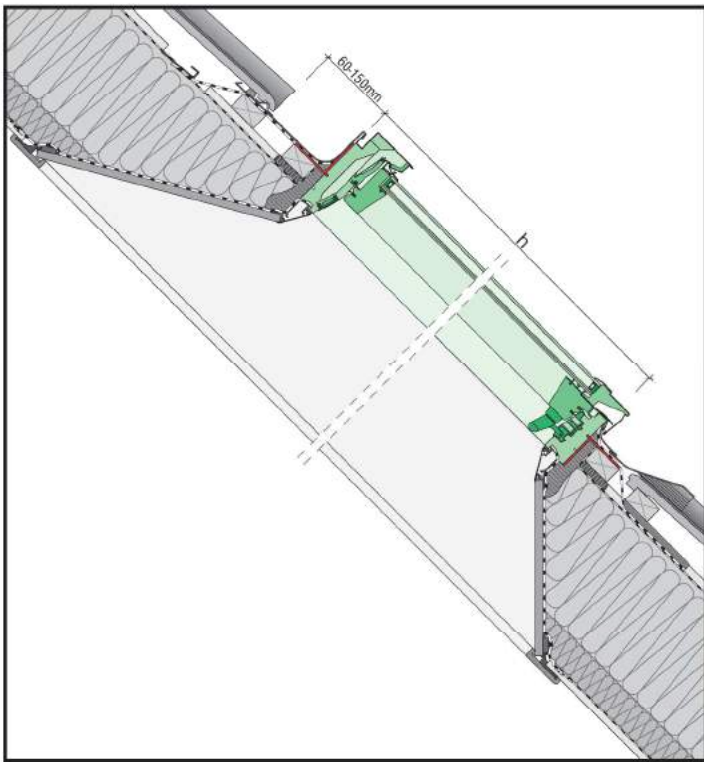


FTP-V5, FTU-V5

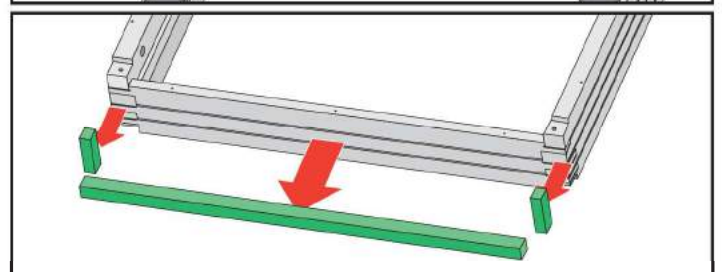
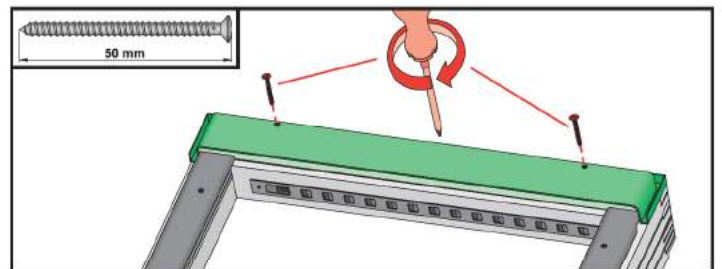
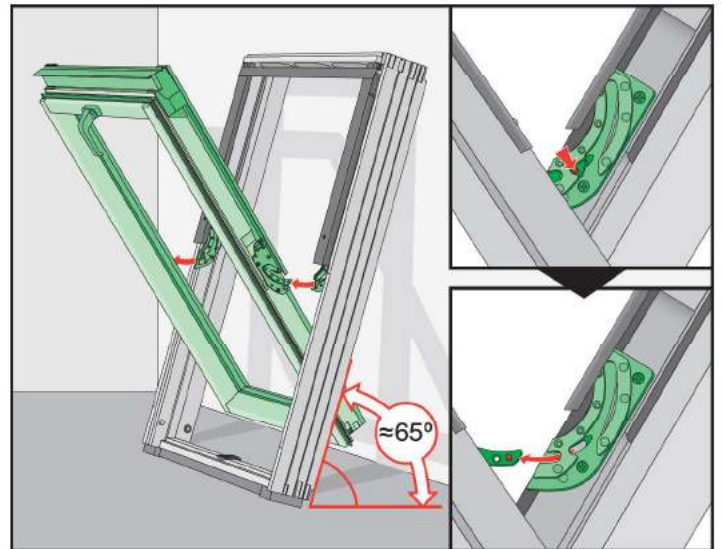
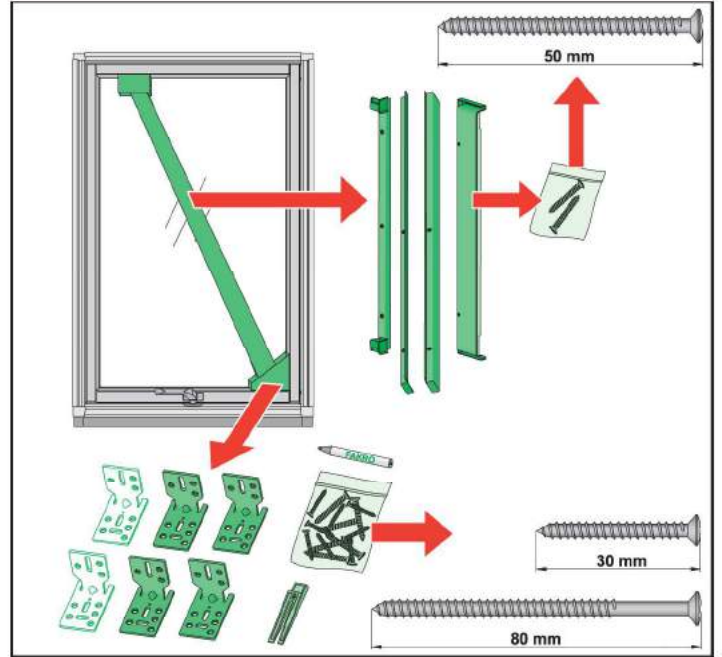
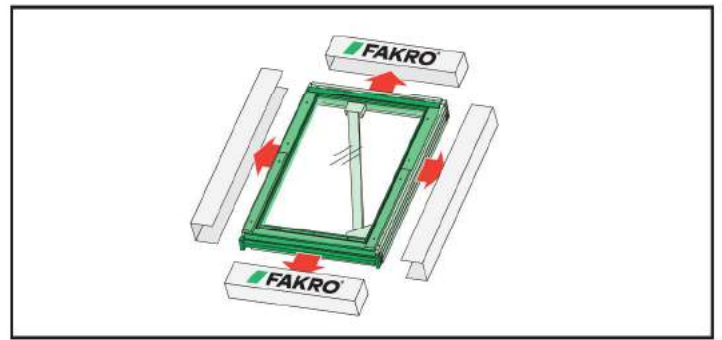


NC 146

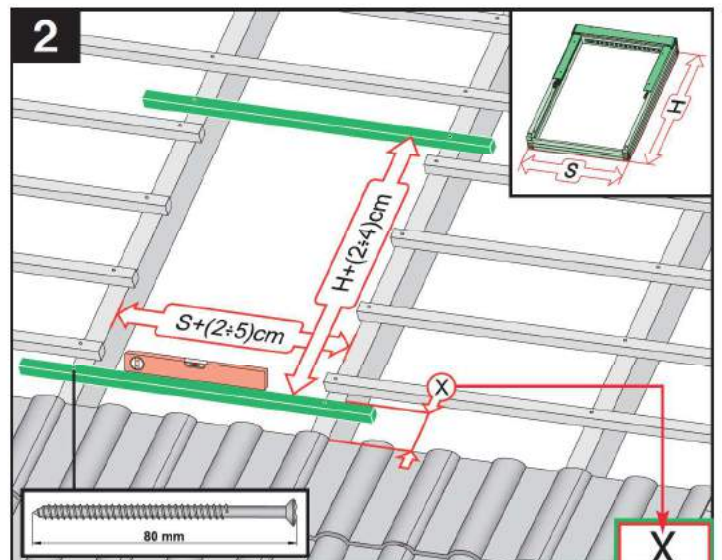
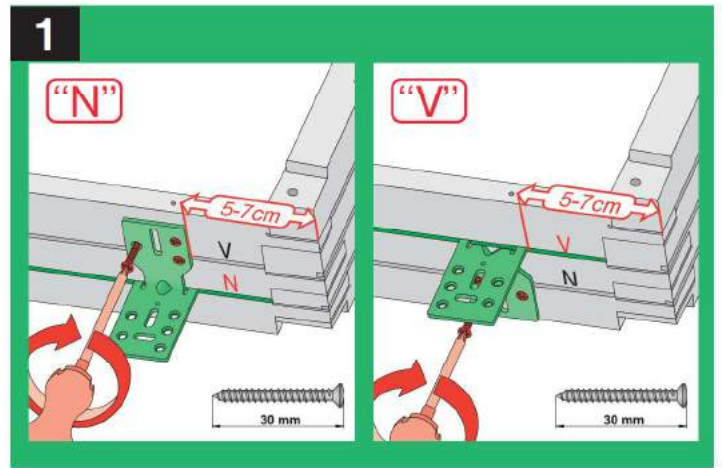
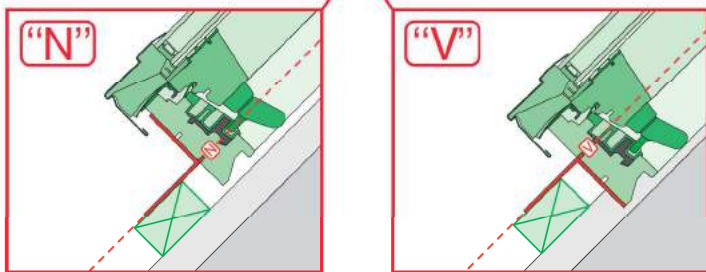
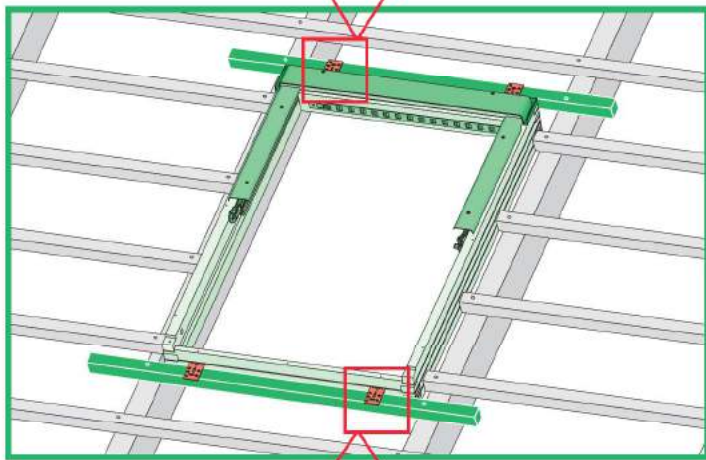
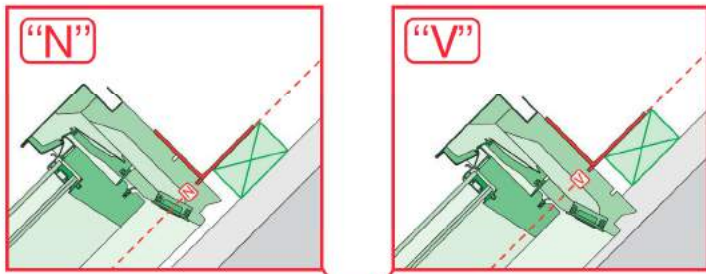
<p>CZ Výrobce a Prodávce nenesou žádnou odpovědnost za nedodržení příslušných předpisů zákona, stavebních předpisů a bezpečnostních požadavků přes užívání výrobku, architekt, montážní nebo majitelé objektu.</p> <p>D Hersteller und Verkäufer übernehmen keine Haftung für Nichtbeachtung entsprechender Rechts- und Bauvorschriften sowie Sicherheitsanforderungen seitens Produktbenutzer, Architekten, Monteurs oder Gebäudeeigentümer.</p> <p>E El fabricante y el vendedor no tienen ninguna responsabilidad por el incumplimiento de la ley vigente, normas de construcción y exigencias de seguridad por parte del usuario del producto, arquitecto, instalador o el propietario del edificio.</p> <p>FR Le fabricant et le revendeur ne prend aucune responsabilité de ne pas respecter les lois applicables, les règlements sur les bâtiments et les exigences de sécurité par l'utilisateur du produit, l'architecte, l'installateur ou le propriétaire du bâtiment.</p> <p>GB Manufacturer and Seller shall bear no liability for failure to comply with the applicable laws, building codes and safety requirements by the user of the product, architect, fitter or owner of the building.</p> <p>H A gyártó és a forgalmazó nem vállal semmilyen felelősséget a vonatkozó törvényi, építészeti és biztonsági előírások nem-teljesítéséért, építész, beszálló/mester vagy épületajánló/szállító nem tartásáért.</p>	<p>I Il Produttore e il Rivenditore non potranno essere ritenuti responsabili per il mancato rispetto, da parte dell'utente del prodotto, del progettista, dell'installatore o del proprietario dell'edificio, delle leggi vigenti, nonché dei regolamenti edilizi e di quelli relativi alla sicurezza.</p> <p>NL De fabrikant en verkoper zijn niet aansprakelijk voor gevolgen bij het niet opvolgen van toepasselijke wetten, bouwvoorschriften en veiligheidsvoorschriften door de gebruiker van het product, de architect, de installateur of de eigenaar van het gebouw.</p> <p>PL Producent i Sprzedawca nie ponosi żadnej odpowiedzialności za nieprzeobrażenie stosownych przepisów prawa, przepisów budowlanych i wymogów bezpieczeństwa przez użytkownika produktu, architekta, montażystę lub właściciela budynku.</p> <p>RU Нет производителей, ни дистрибуторов не сьт vor assume aucun fet de dispandee penitu respectarea legilor în vigoare, a legilor din domeniul construcțiilor sau a măsurilor de siguranță impuse oficialităților producției, arhitecților, montajistilor sau proprietarilor obiectiv.</p> <p>RUS Строительные нормы и нормы безопасности ответственность с производителя и продавца снимается.</p> <p>SK Výrobca a predávca nenesú žiadnu zodpovednosť za nedodržanie príslušných ustanovení zákona, stavebných predpisov a bezpečnostných požiadaviek užívateľom výrobku, architektom, montážm alebo majiteľom objektu.</p>
---	---



2

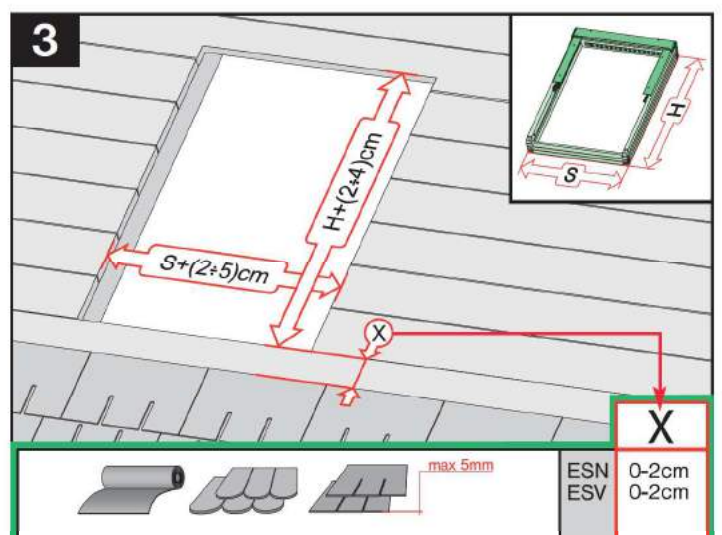


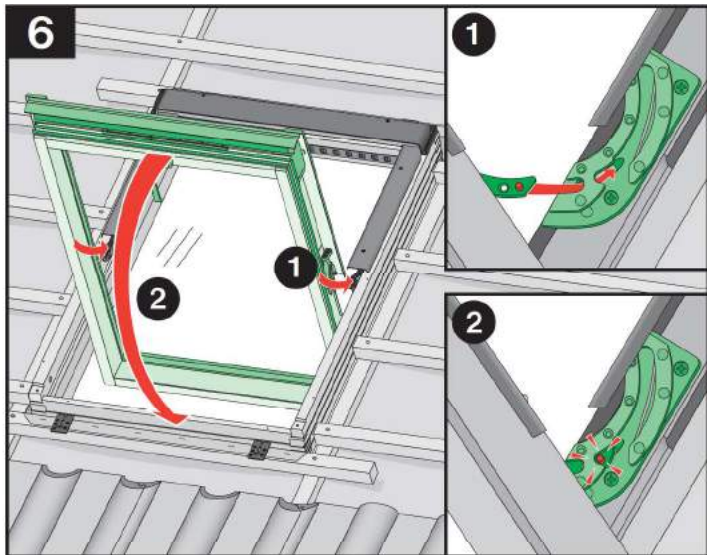
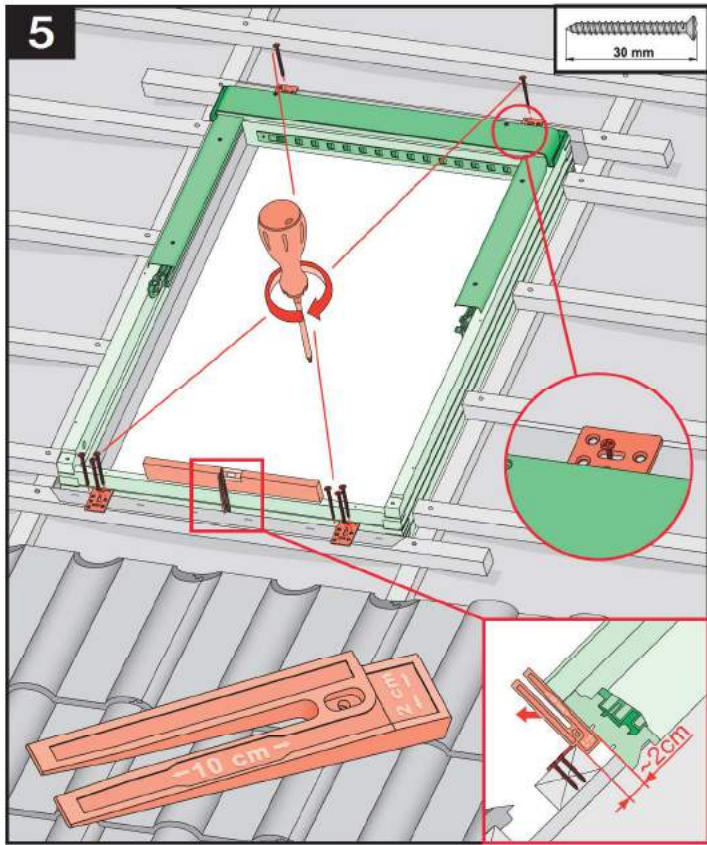
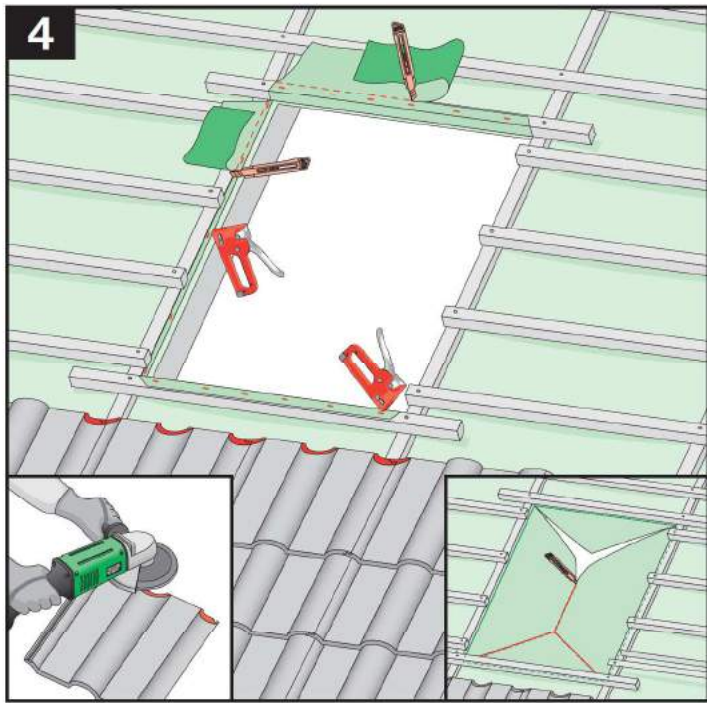
3



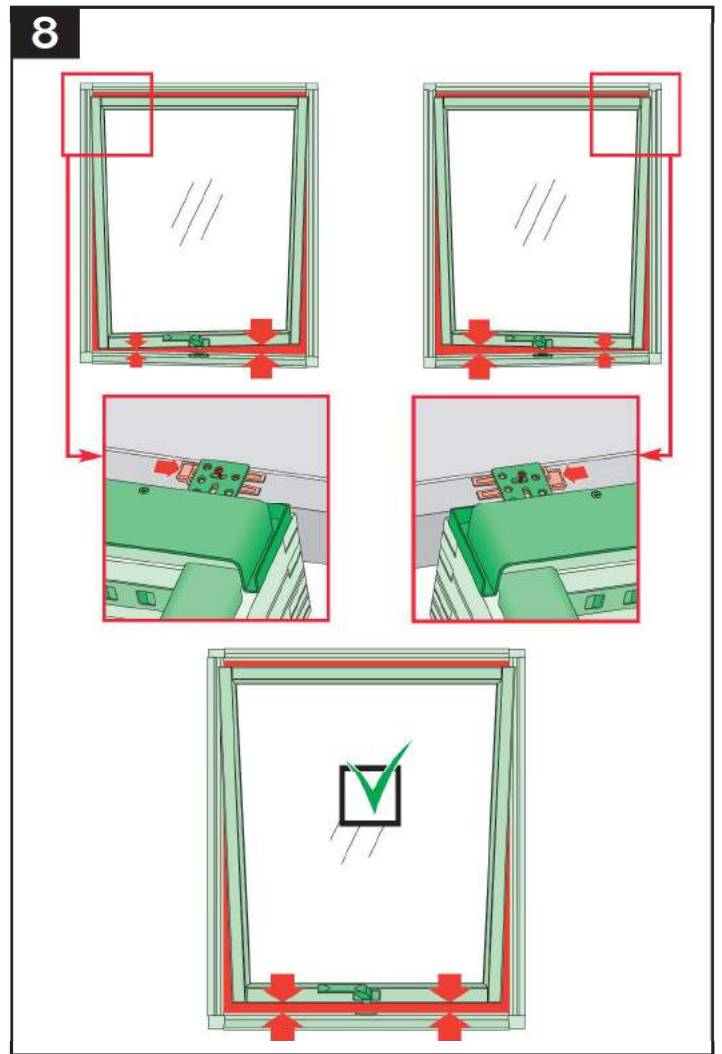
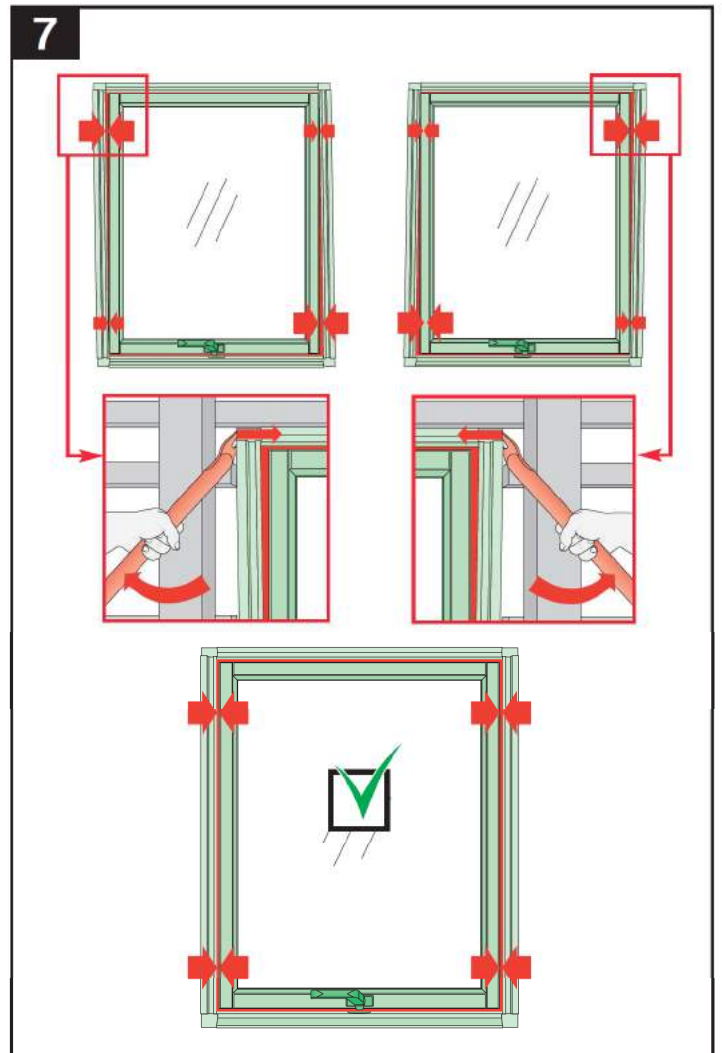
	max 90mm	EHN	7-10cm
		EHV	7-10cm
	max 45mm	EZN	6-8cm
		EZV	6-8cm
	12-16mm	EGV	4cm
	12-16mm	EPV	6cm
	max 5mm (V) max 15mm (N)	ELN	0-2cm
		ELV	0-2cm
		EEN	0-2cm
		EEV	0-2cm

	max 90mm	EHN		15°-90°
		EHV		15°-90°
		-		-
	max 45mm	EZN		15°-90°
		EZV		15°-90°
		-		-
	max 15mm (N) max 5mm (V)	ELN		15°-90°
		ELV		15°-90°
		-		-
	max 5mm	ESN		15°-90°
		ESV		15°-90°
		-		-

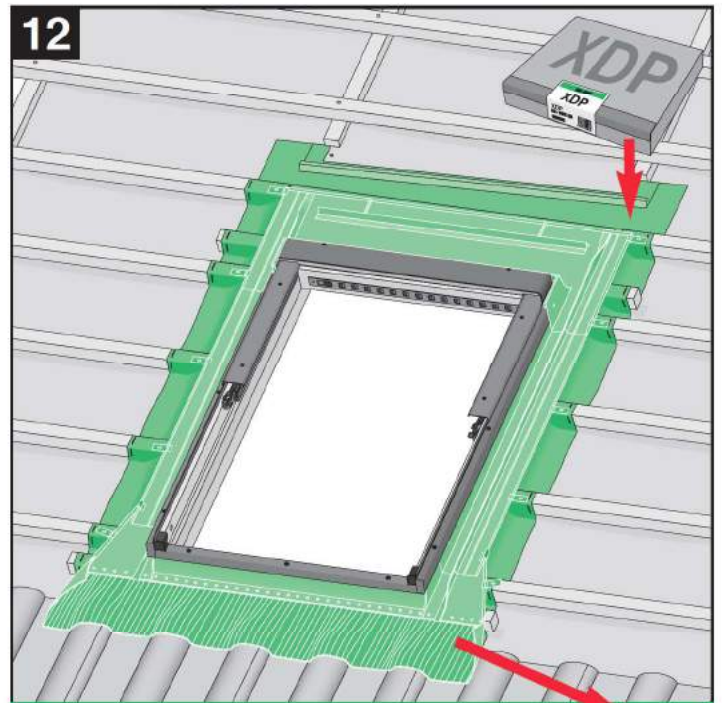
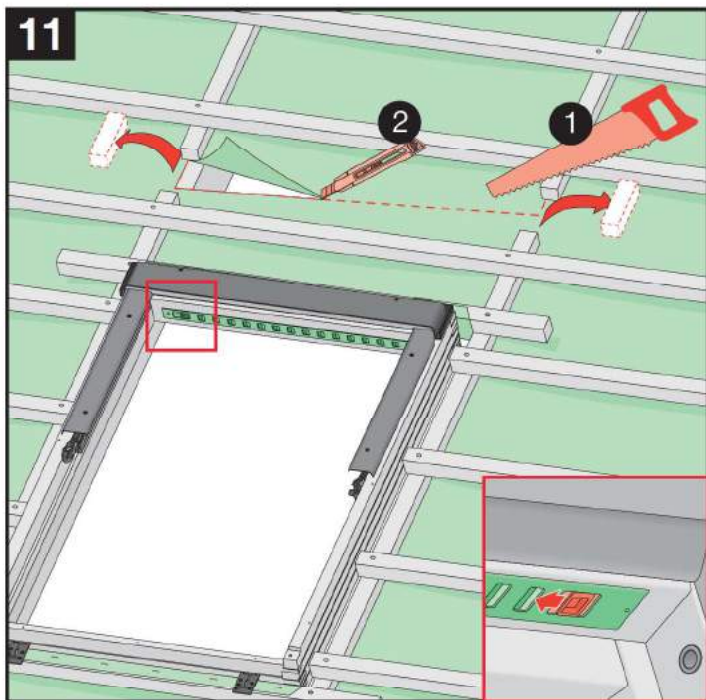
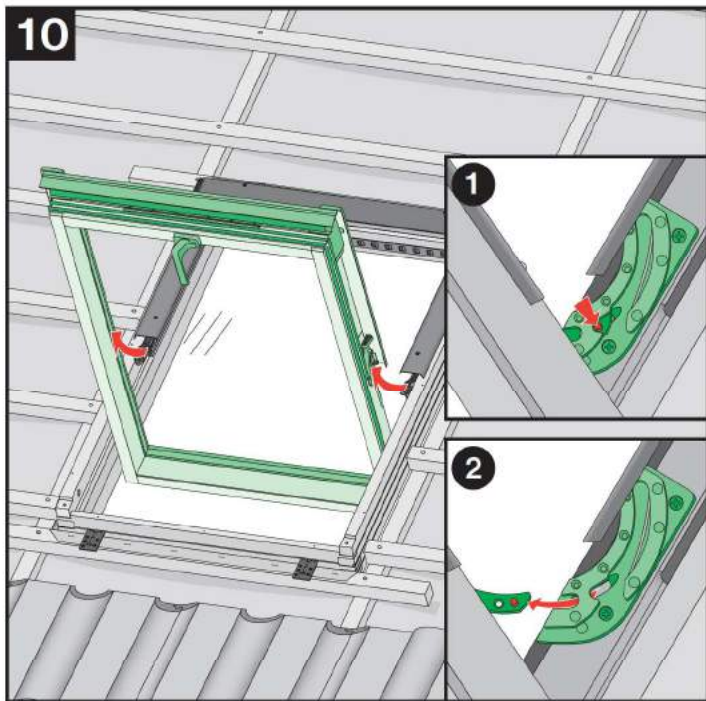
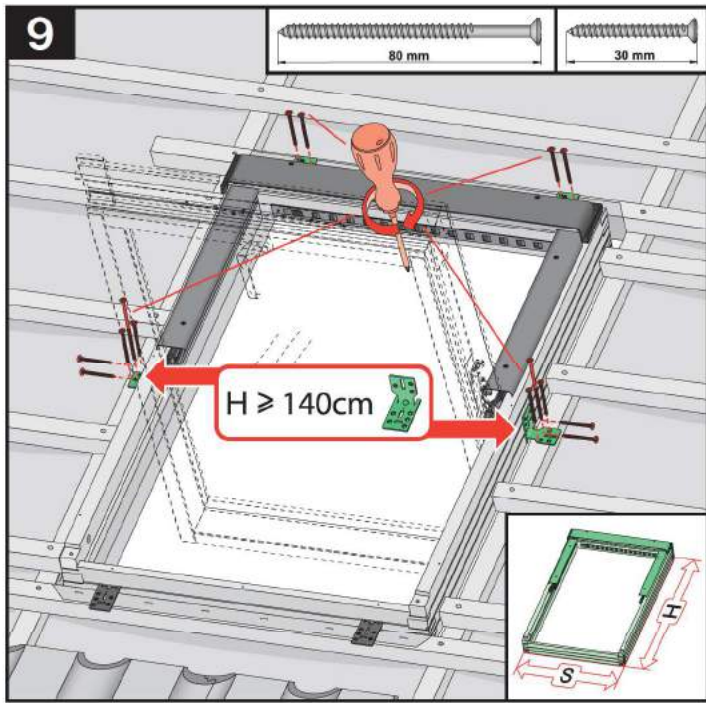




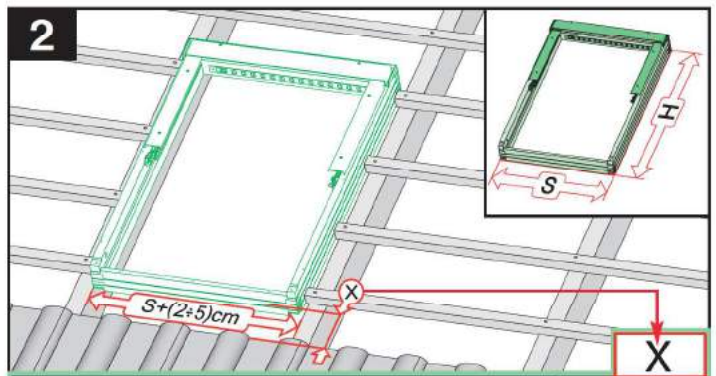
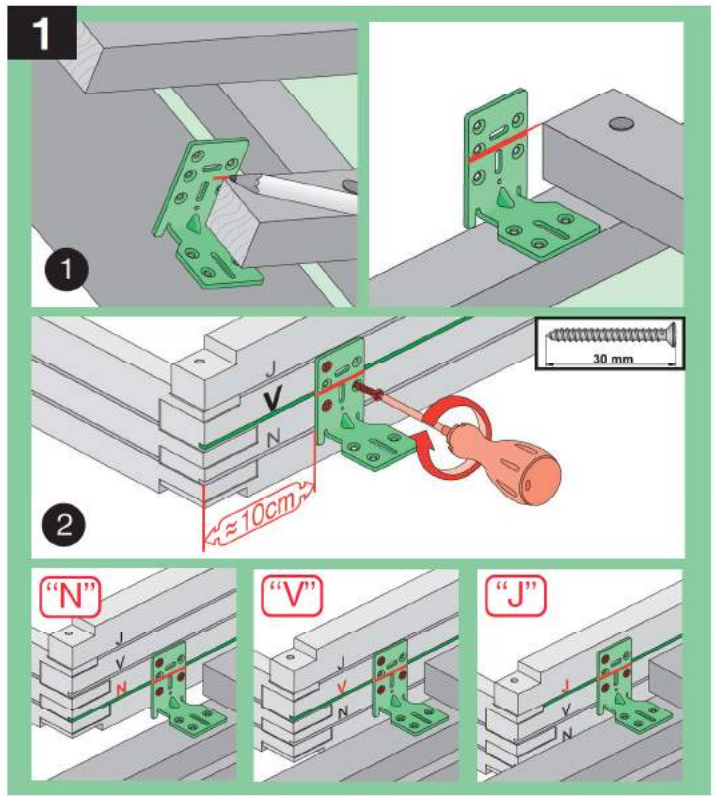
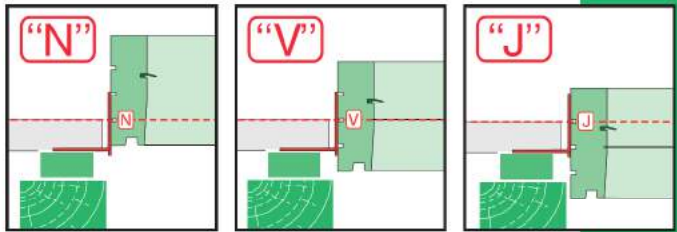
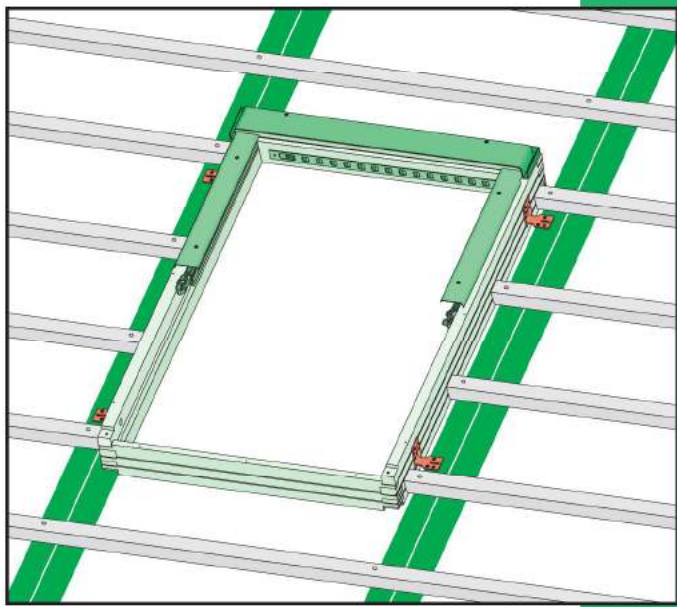
6



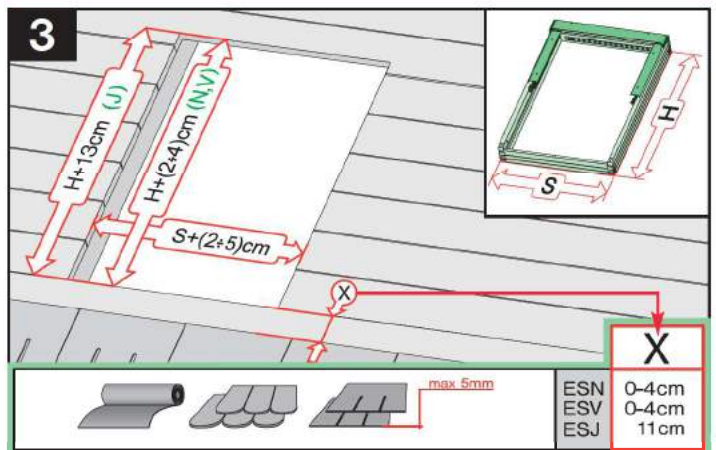
7



	max 90mm	EHN EHV
	max 45mm	EZN EZV
	max 5mm	ESN ESV
	360-420mm 12-16mm	EGV
	250-280mm max 18mm	EPV
	max 5mm (V) max 15mm (N)	ELN ELV
		EEN EEV

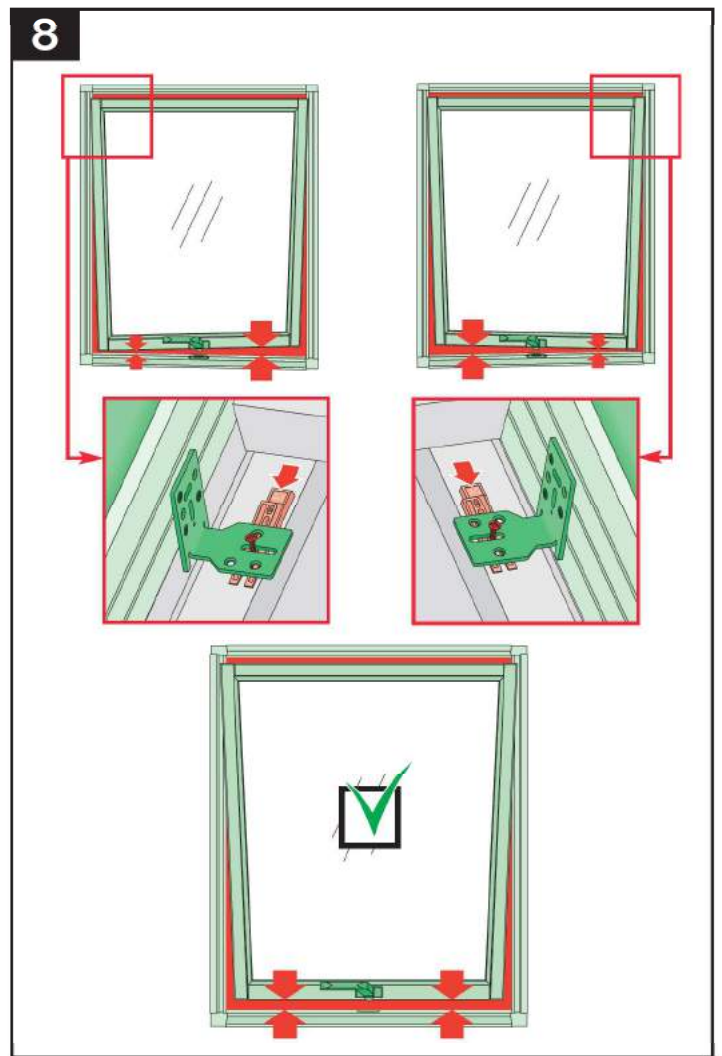
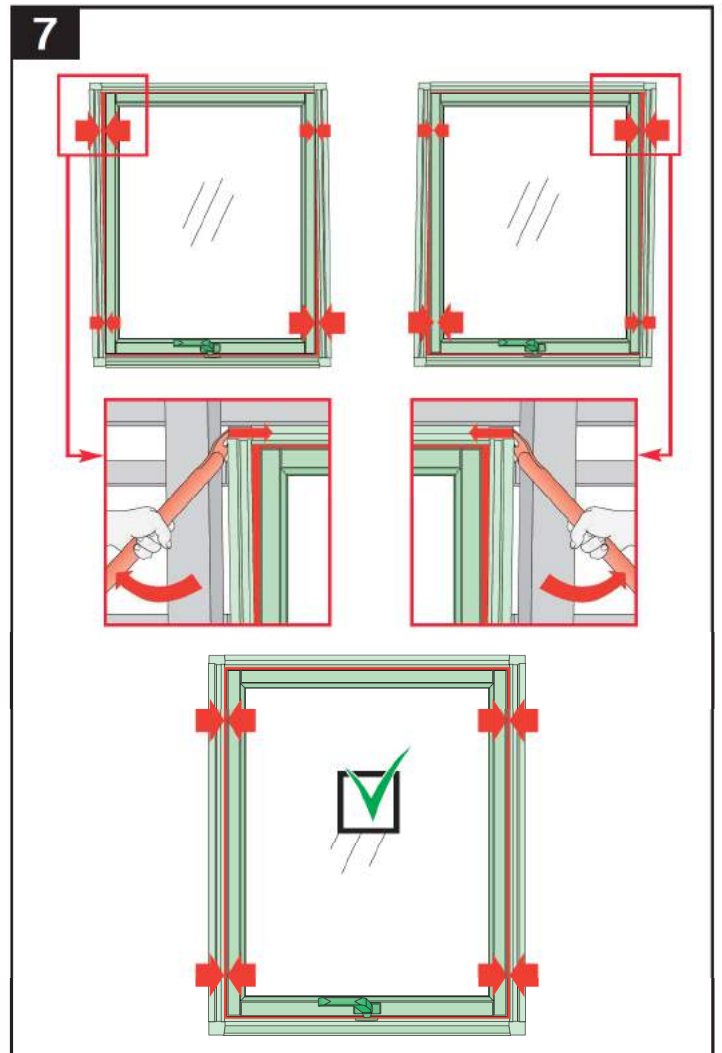
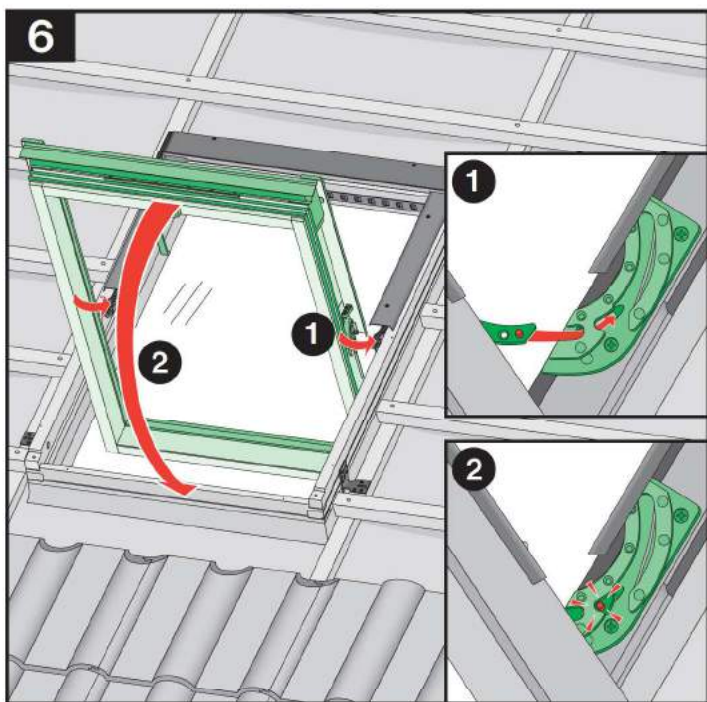
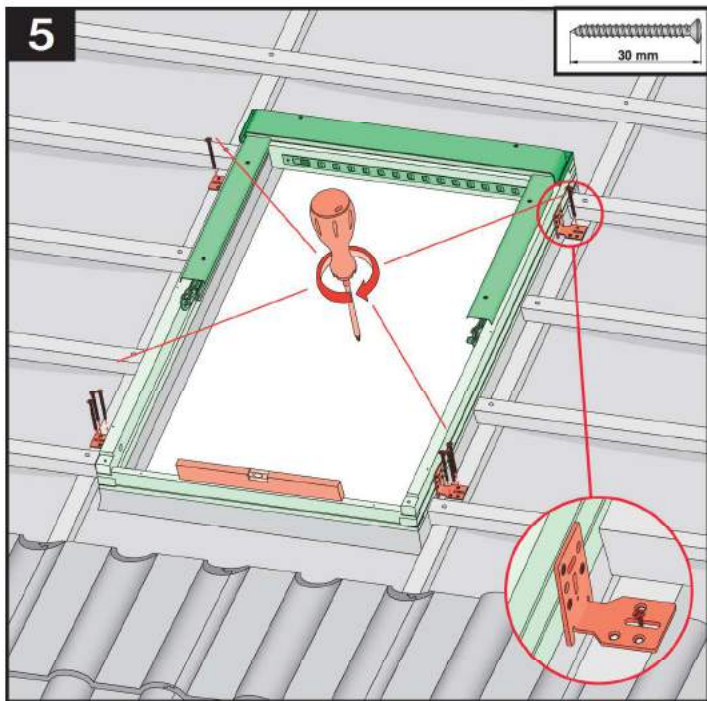
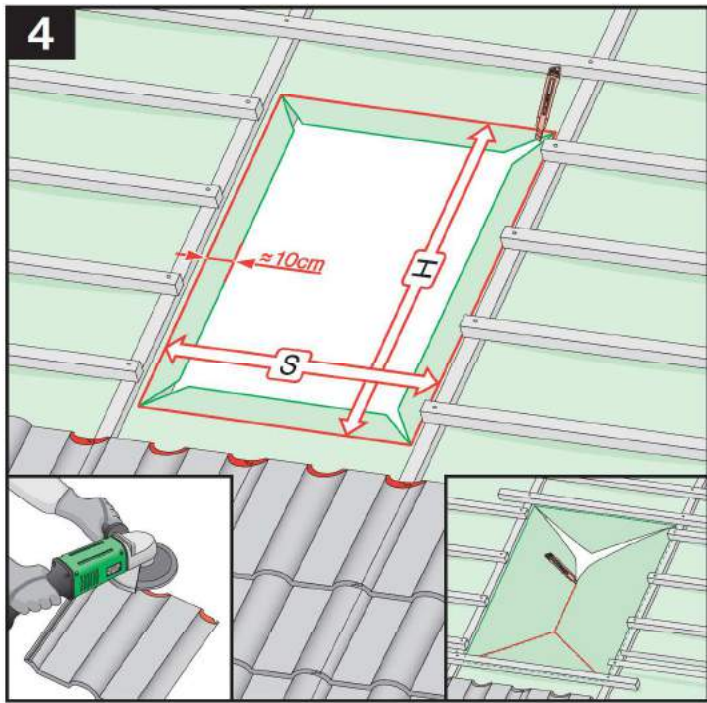


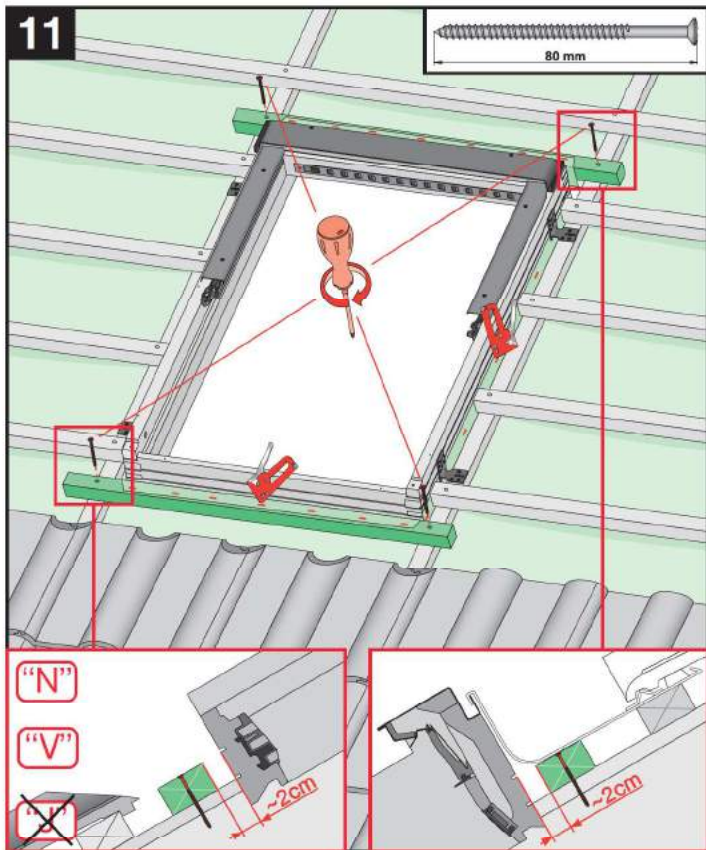
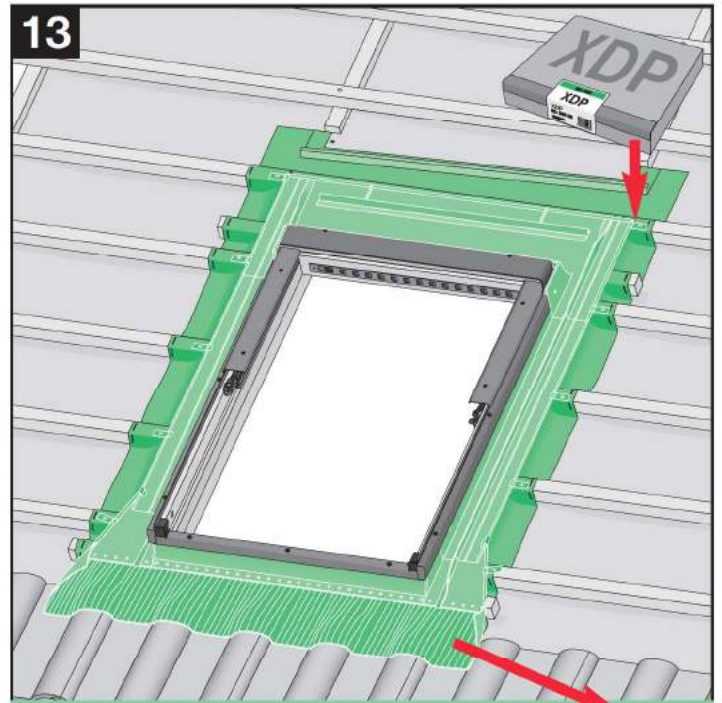
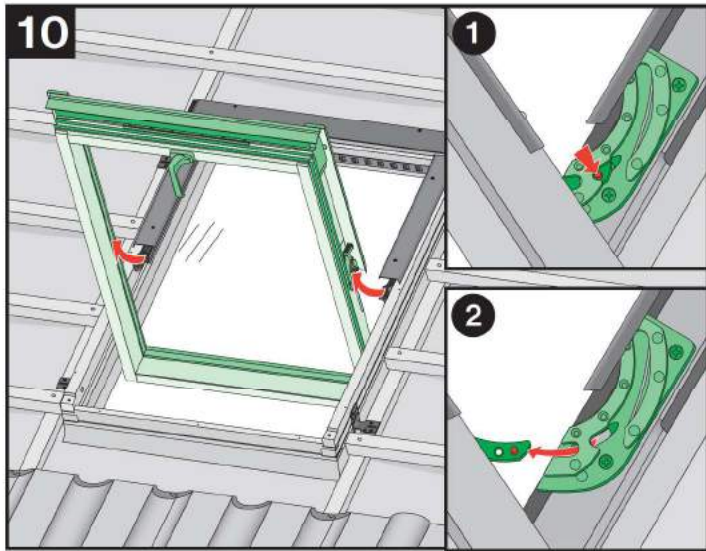
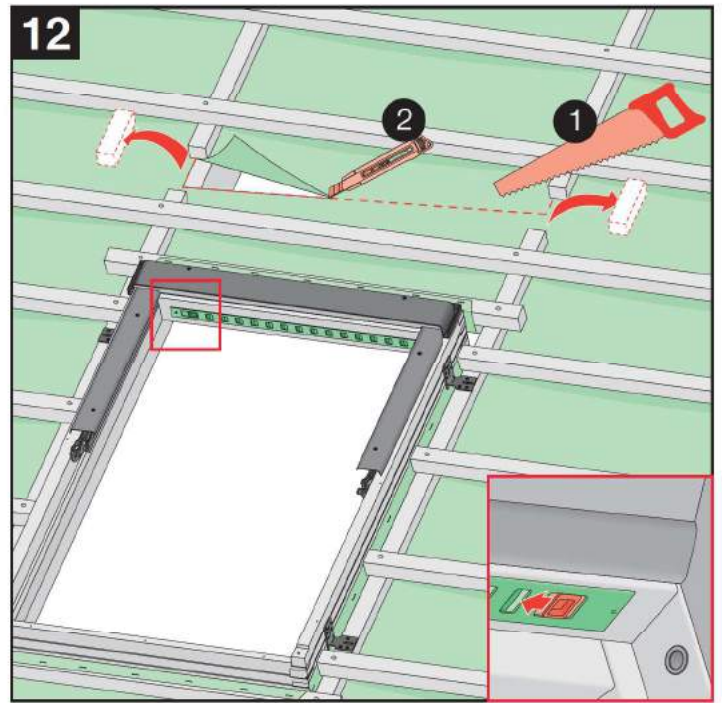
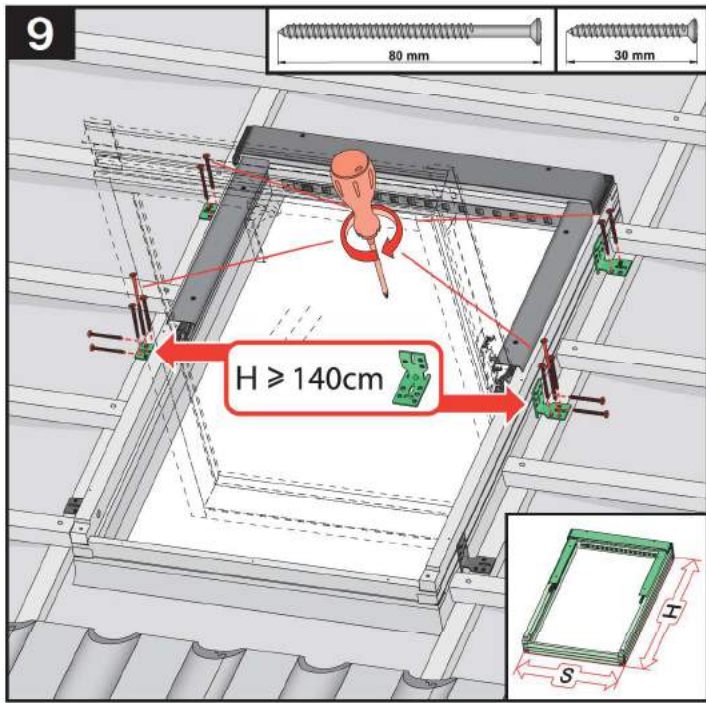
	EHN EHV	9-12cm 9-12cm
	EZN EZV EZJ	8-10cm 8-10cm 20cm
	EGV	6cm
	EPV	8cm
	ELN ELV ELJ	0-4cm 0-4cm 11cm
	EEN EEV EEJ	0-4cm 0-4cm 11cm



	ESN ESV ESJ	0-4cm 0-4cm 11cm
--	-------------------	------------------------

	max 90mm	EHN		15°-90°
		EHV		15°-90°
		-	-	-
	max 45mm	EZN		15°-90°
		EZV		15°-90°
		EZJ		20°-90°
	max 15mm (N) max 5mm (V) max 5mm (J)	ELN		15°-90°
		ELV		15°-90°
		ELJ		20°-90°
	max 5mm	ESN		15°-90°
		ESV		15°-90°
		ESJ		20°-90°





	max 90mm	EHN EHV
	max 45mm	EZN EZV EZJ
	max 5mm	ESN ESV ESJ
	12-16mm 380-420mm	EGV
	max 18mm 250-280mm	EPV
	max 5mm (V,J) max 15mm (N)	ELN ELV ELJ
		EEN EEV EEJ